

KENDO & JUDO HAND LABELLERS

[KENDO]

Single Line Hand Labeller
6 to 10 alphanumeric characters
Label sizes:
22 & 26 mm x 12 mm

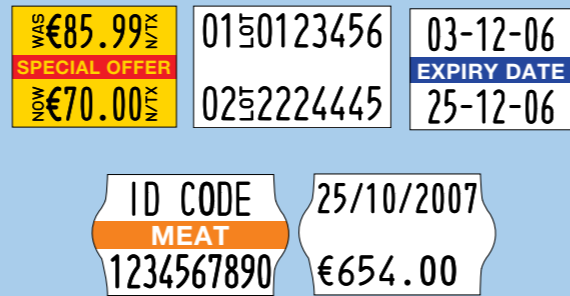
Pricing and coding for all Retail needs



[JUDO]

Two Lines Hand Labeller
8 to 10 alphanumeric characters per line
Label sizes:
22 & 26 mm x 16 mm

More informative pricing and Traceability



Hand Labellers

SATO Hand Labelling Systems - Fast, Easy & Flexible

Style of Europe

New Concept



APPLICATIONS

What more can you do with SATO Hand labellers?



Pricing



Traceability



Price Mark Down



Date Coding
(parking, production, expiration,...)



MARKING PRO PRODUCTS

SATO Retail Solutions:

Ranges from Hand labellers to Electronic Printers to cater to every retail market demand.



HT200e



MB200i



Mark Down Label



Mark Down Label



Precise Printing



European Layouts



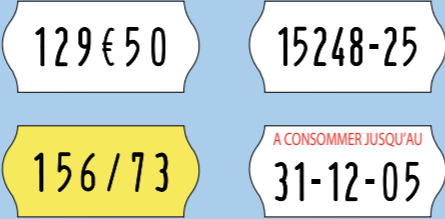
Easy-to-load
ink roller

SINGLE LINE HAND LABELLERS

[SAMARK 26]

Single Line Hand Labeller
5, 6 & 8 alphanumeric characters
Label sizes: 26 mm x 12 mm

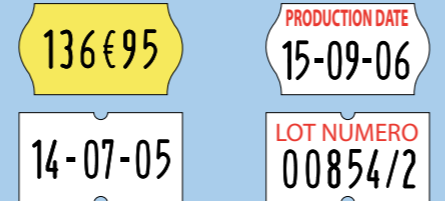
European standard labels



[SAMARK]

Single Line Hand Labeller
5, 6 & 8 alphanumeric characters
Label sizes: 21.6 mm x 12 mm

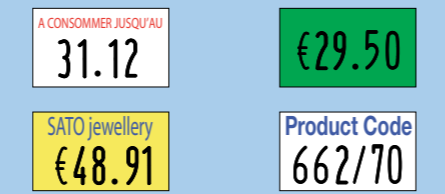
Costs saving label size



[PB1]

Single Line Hand Labeller
5 & 6 alphanumeric characters
Label sizes: 18 mm x 10.4 mm

Unique label size for small items



[DUO XL]

Single Line Hand Labeller
5 & 6 Bold characters
Label sizes: 23 mm x 16 mm

Promotional labelling



SEAL HAND LABELLERS

[SEAL]

Pre-printed labels Hand Labeller

Promotional SEAL labelling



Model	Single Feed (mm)	Seals per roll (Single feed)	Double Feed (mm)	Seals per roll (Double feed)
SEAL 33	33 x 25.4	500	33 x 50.8	250



TWO LINES HAND LABELLERS: DUO SERIES

[DUO 16]

Two Lines Hand Labellers
8 characters per line
Label sizes: 18 x 16 mm

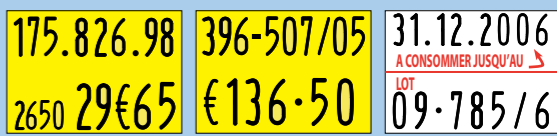
Simple labelling for price and code



[DUO 20]

Two Lines Hand Labellers
10 characters per line
Label sizes: 23 mm x 16 mm

For traceability and EU regulations

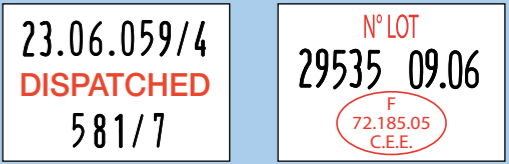


THREE LINES HAND LABELLERS: PB3 SERIES

[PB 3 - 208]

Three Lines Hand Labellers
6, 8, 10 & 12 characters per line
Label sizes: 30 mm x 20.8 mm

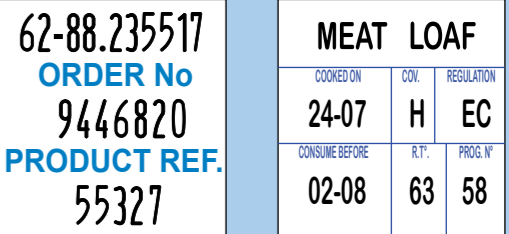
Industry applications



[PB 3 - 312]

Three Lines Hand Labellers
6, 8, 10 & 12 characters per line
Label sizes: 30 mm x 31.2 mm

Enhanced traceability



[PB 3 - 416]

Three Lines Hand Labellers
6, 8, 10 & 12 characters per line
Label sizes: 30 mm x 41.6 mm

Product identification (e.g.: eggs production, catering service,...)

